

GENERAL INFORMATION

Santa Rosa Cove Communities

SURROUNDING LA QUINTA HOTEL



Landmark
REAL ESTATE COMPANY

Santa Rosa Cove Condominiums

About 350 condominiums, some on golf fairway, six floor plans:

Anacapa: 2 bdrm/2 bath, off fairway, appx. 1389 sq.ft.

Chapala: 3 bdrm/2 bath, off fairway, appx. 1591 sq.ft.

Capistrano: 3 bdrm/3.5 bath, guest house, off fairway, appx. 1922 sq.ft.

La Quinta: 3 bdrm/3.5 bath, guest house, fairway, spa, appx. 1922 sq.ft.

Cadiz: 3 bdrm/3 bath, fairway/near fairway, spa, appx. 2185 sq.ft.

Seville: 3 bdrm/3.5 bath, guest house, fairway, spa, appx. 2286 sq.ft.

Homeowners Dues: \$375/month (includes cable, security gates, common areas)

La Quinta Hotel Tennis Villas

About 48 condominiums, some overlook tennis, five two-story floor plans:

Courtside: 1 bdrm/2 bath/den (or 2nd bdrm), living rm. up, appx. 1406 sq.ft.

Wimbledon: 2 bdrm/2.5 bath, living room upstairs, appx. 1632 sq.ft.

Grand Prix: 2 bdrm/2.5 bath, bedrooms upstairs, appx. 1736 sq.ft.

Davis Cup: 2 bdrm/2.5 bath, bedrooms upstairs, appx. 1627 sq. ft.

Masters: 3 bdrm/3 bath, (2 bdrm up/1 down), living rm. down, appx. 1931 sq.ft.

Homeowners Dues: \$254/month (includes security gates, common areas. Tennis extra)*

Los Estados Homes

About 37 single family homes, all on fairway, five floor plans:

Sonora: 3 bdrm/3.5 bath, guest house, appx. 2405 sq.ft.

Mesa: 3 bdrm/3.5 bath, guest house, appx. 2586 sq.ft.

Sedona: 3 bdrm/3 bath, morning/family rm, some w/cart garage, 2885 sq.ft.

Taos: 4 bdrm/4 bath, guest house, morning/family rm, appx. 3105 sq.ft.

Santa Fe: 3 bdrm/3.5 bath, media rm., morning/family rm, appx. 3508 sq.ft.

Homeowners Dues: \$245/month (includes security gates, common area.)

GOLF & TENNIS MEMBERSHIP INFORMATION*

Information on Golf Memberships, contact La Quinta Hotel Golf Club: (619) 564-7610.

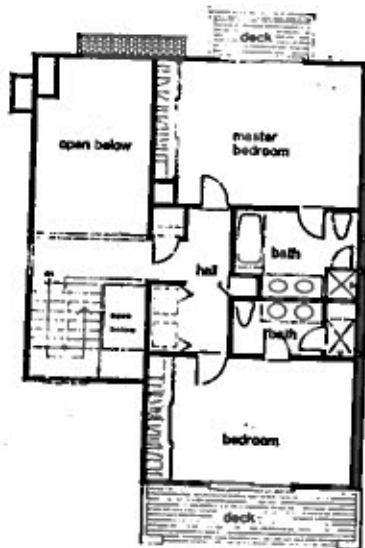
Information on Tennis Memberships, La Quinta Hotel Tennis Club: (619) 345-2858

Real Estate Information: STEVE ABRAHAM or GARY KENNEDY

Call us 24-Hours a Day at (619) 564-3200

or call us at (619) 564-1200

(More Property Information on Back) →



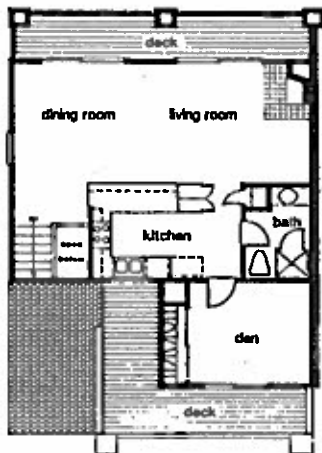
Upper



Lower

Plan D Grand Prix 1736 sq ft. (estimated)
Two bedrooms, two and one half baths

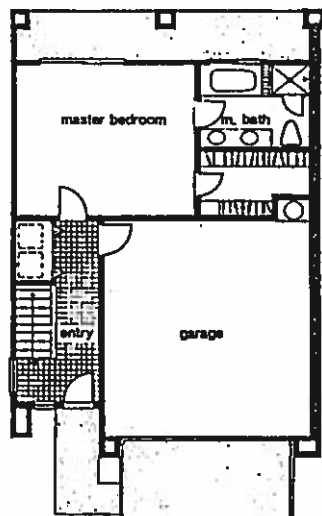
Tennis Villas



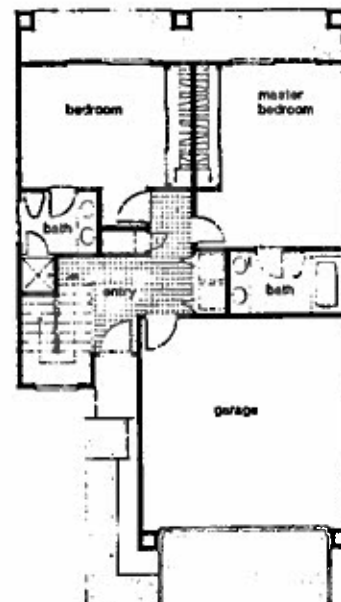
Upper



Upper



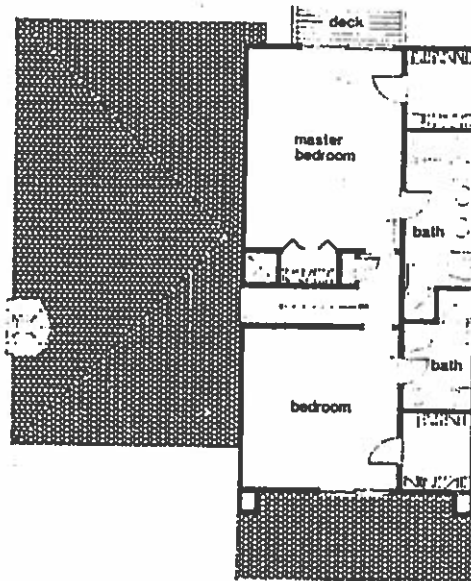
Lower



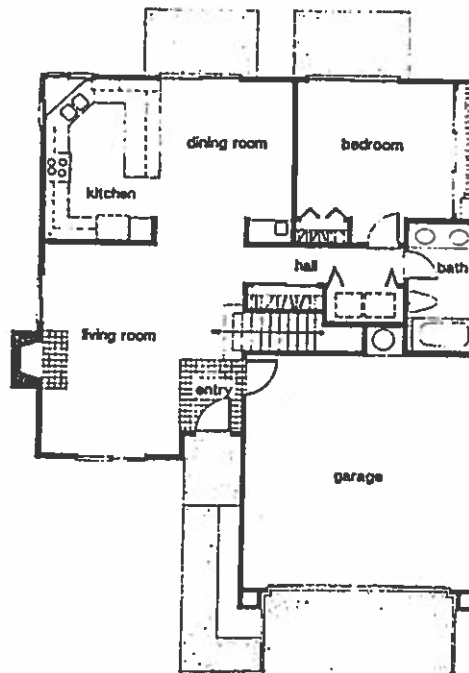
Lower

Plan A **Courtside** 1406 sq. ft. (estimated)
One bedroom, one den, two baths

Plan C **Wimbledon** 1632 sq. ft. (estimated)
Two bedrooms, two and one half bat



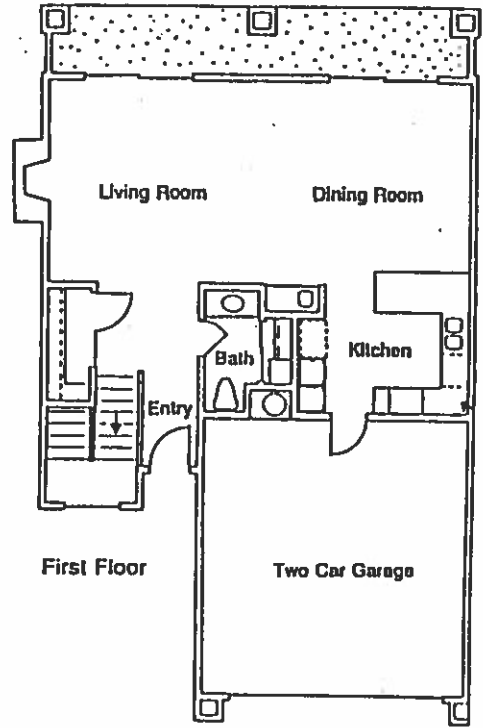
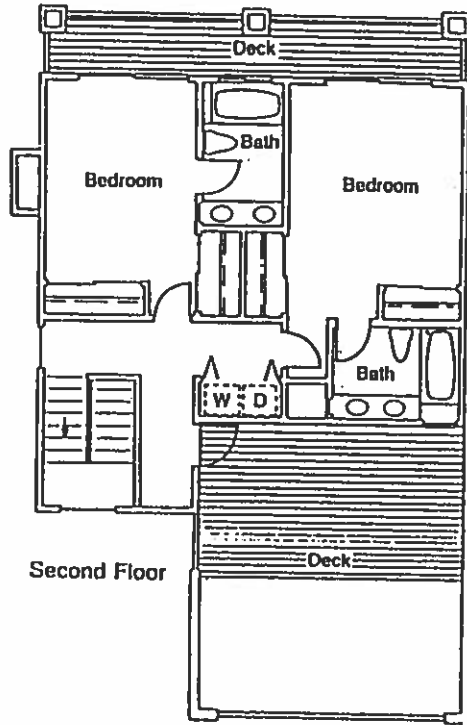
Upper



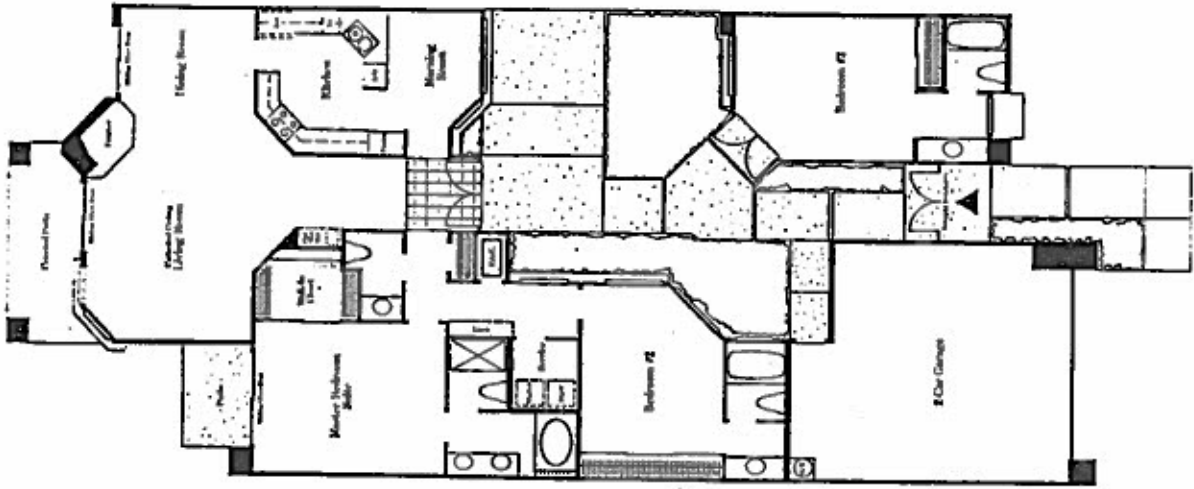
Lower

Tennis Villas

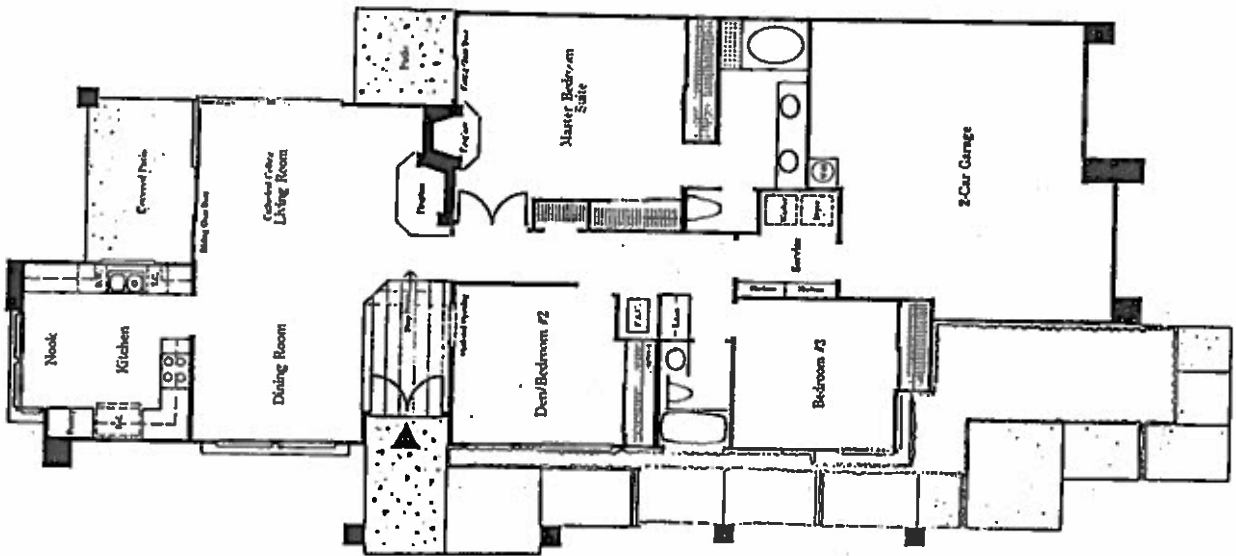
Plan E Masters 1931 sq. ft. (estimated)
Three bedrooms, three baths



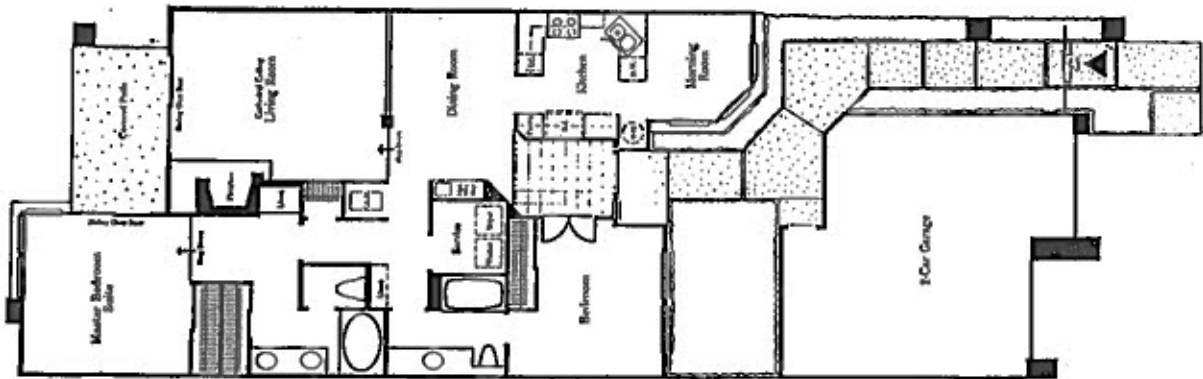
Davis Cup (B) Two Bedrooms, 2½ Baths, 1627 square feet



CAPISTRANO



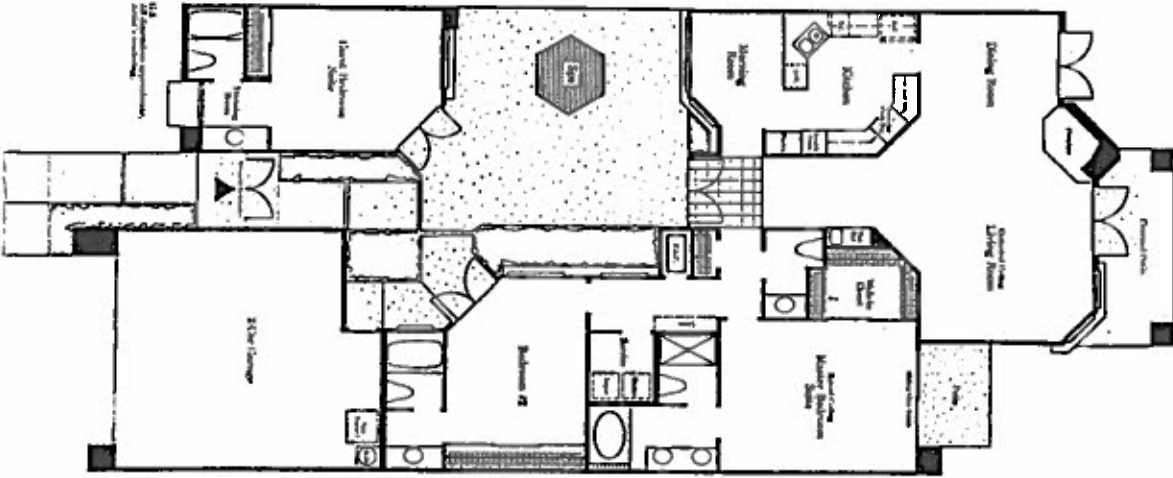
CHAPALA



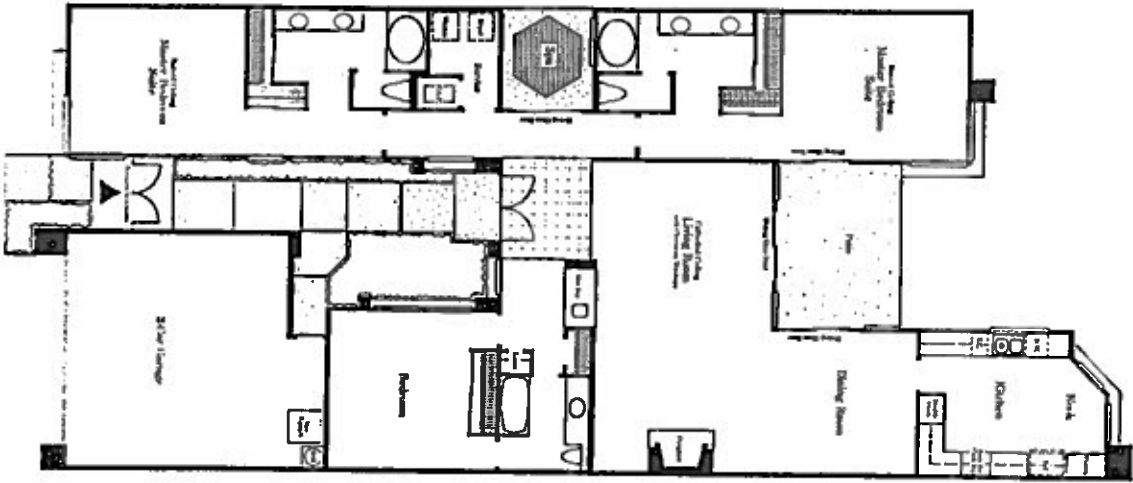
ANACAPA

Santa Rosa Cove

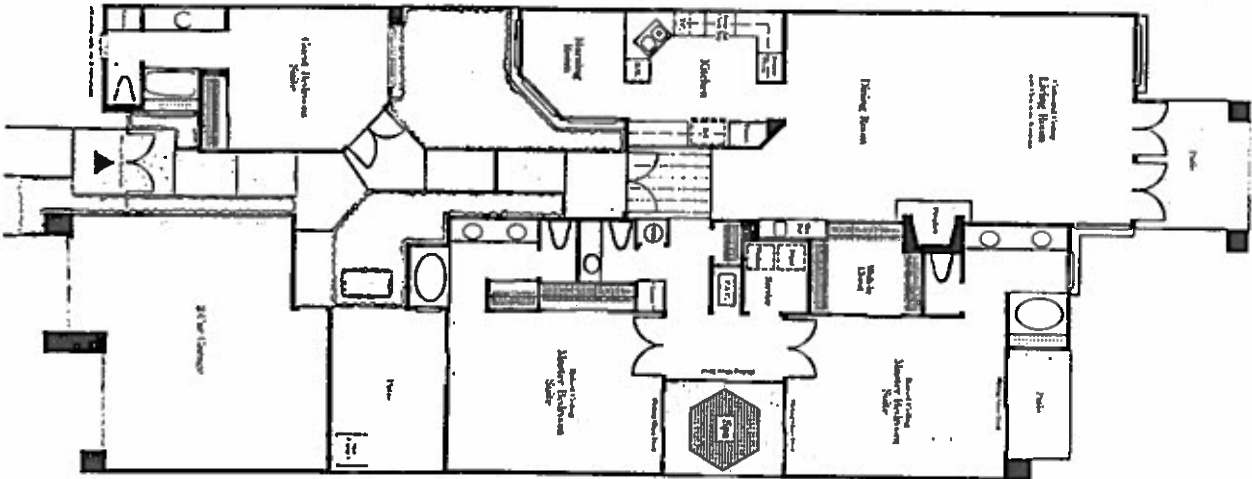
LA QUINTA



CADIZ



SEVILLE



Duna La Quinta



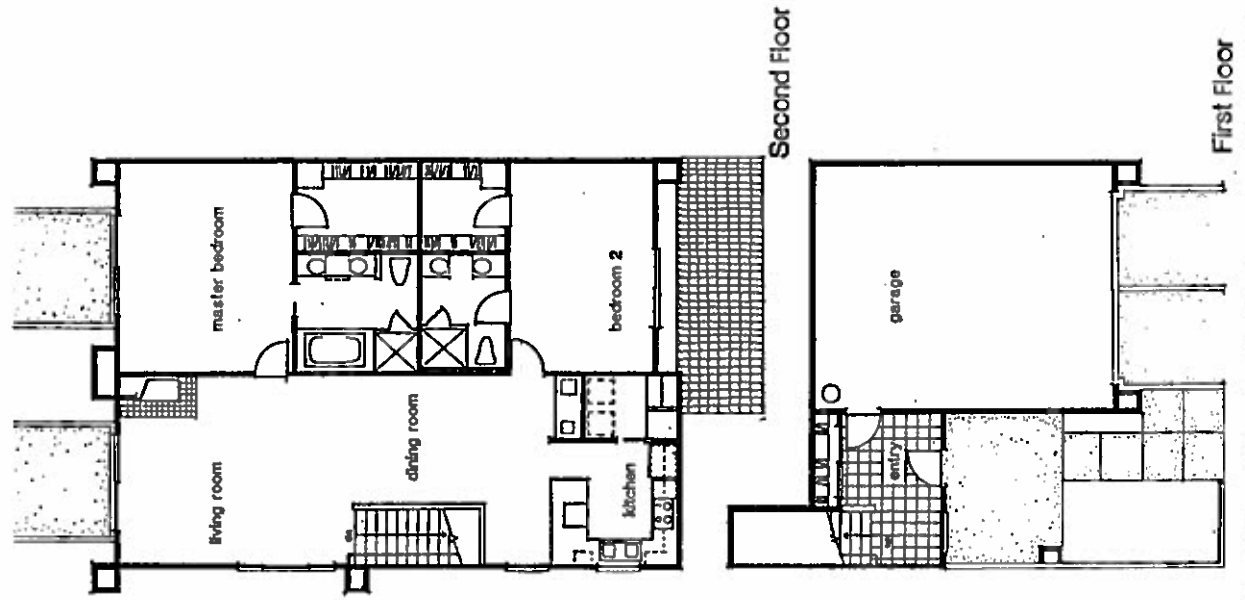
50th Avenue

Calle Norte

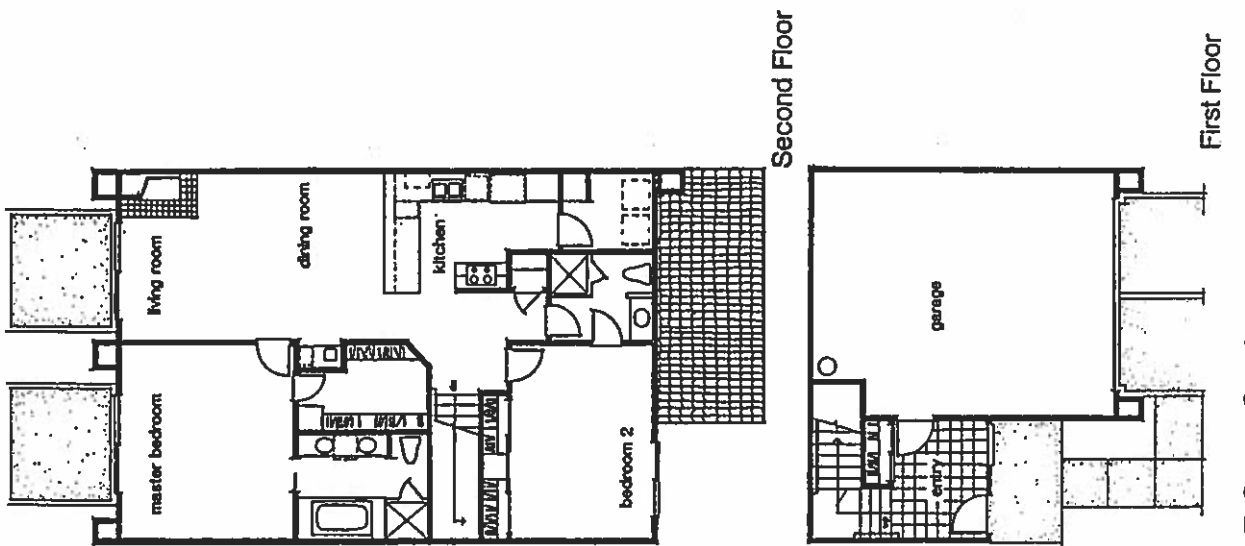
Security Gate

Peterson Development



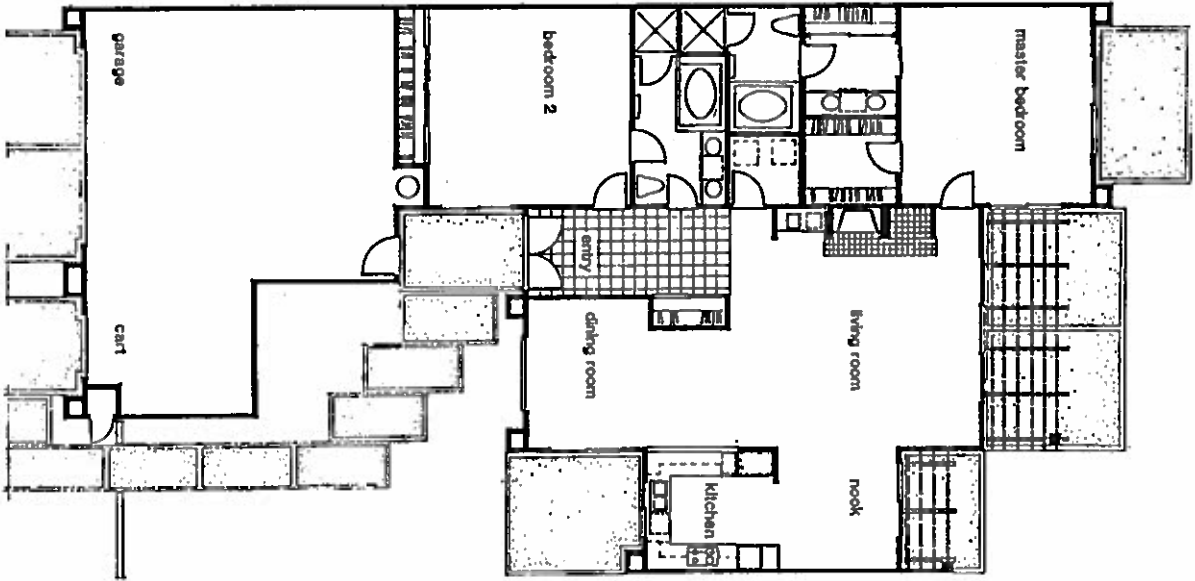


Plan F Quail Creek Two bedrooms, two baths 1786 sq. ft. (estimated)

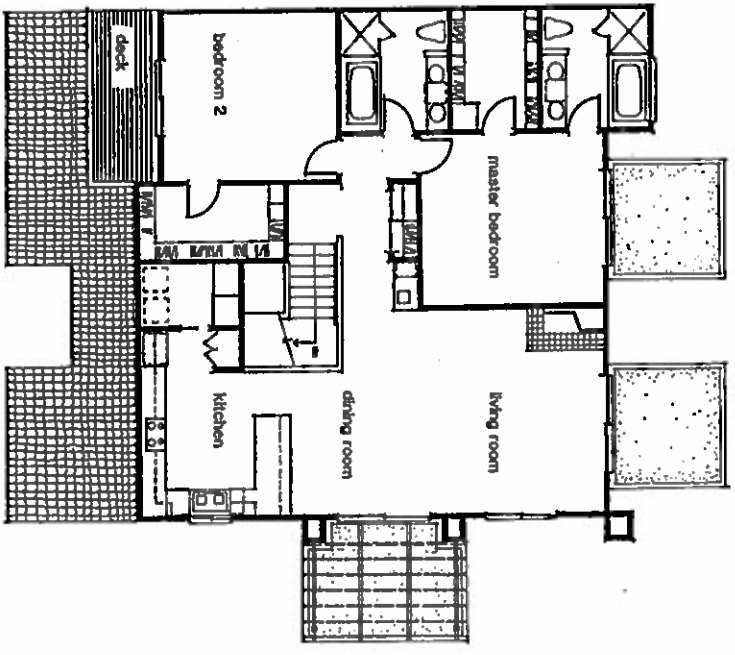


Plan E Sugar Creek Two bedrooms, two baths 1555 sq. ft. (estimated)

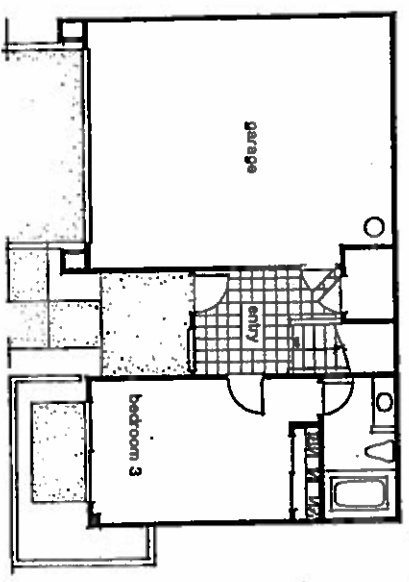
Duna La Quinta



Plan A La Quinta Two bedrooms, two baths 2010 sq ft (estimated)

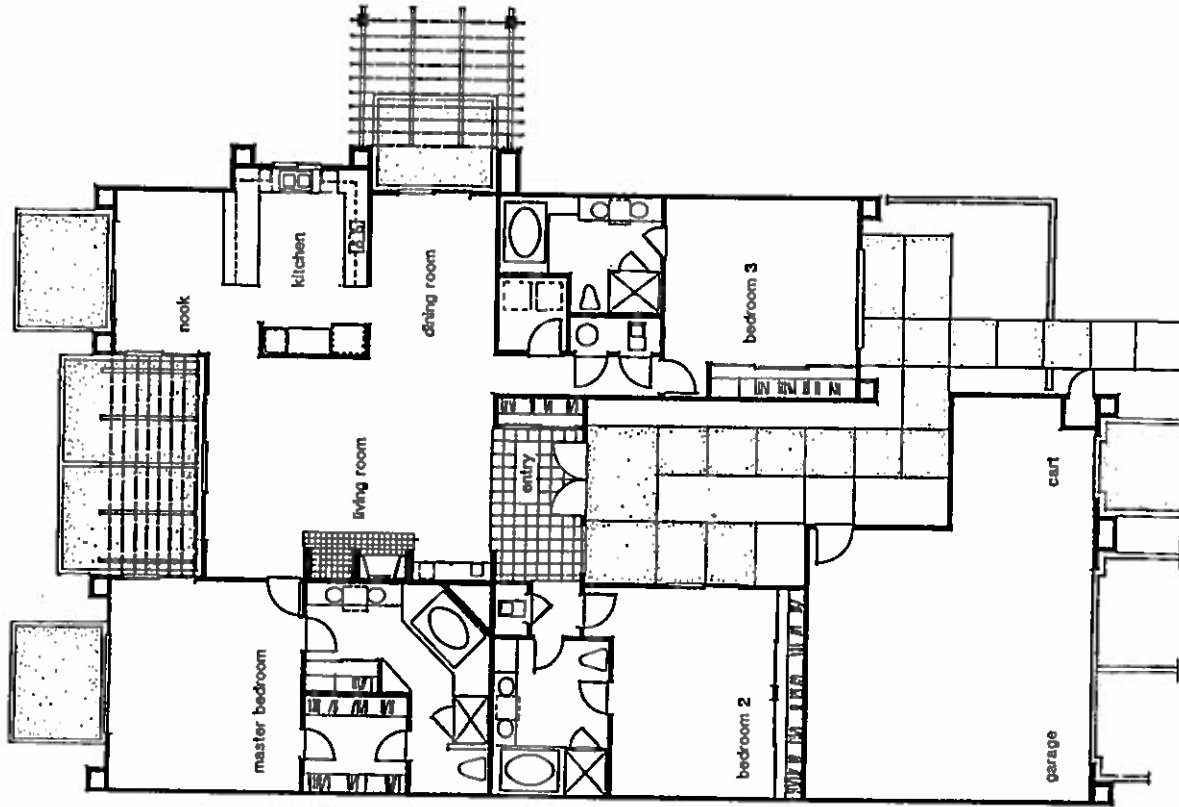


Second Floor

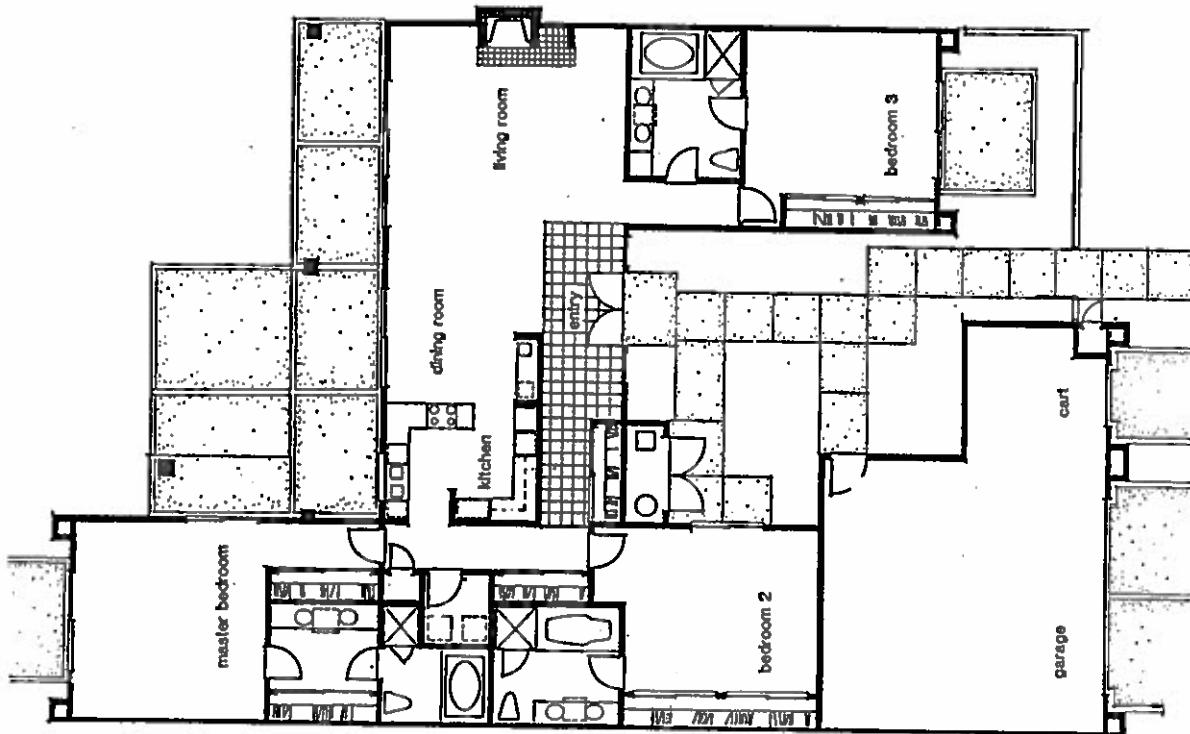


First Floor

Plan G Mission Hills Three bedrooms, three baths 2121 sq ft (estimated)

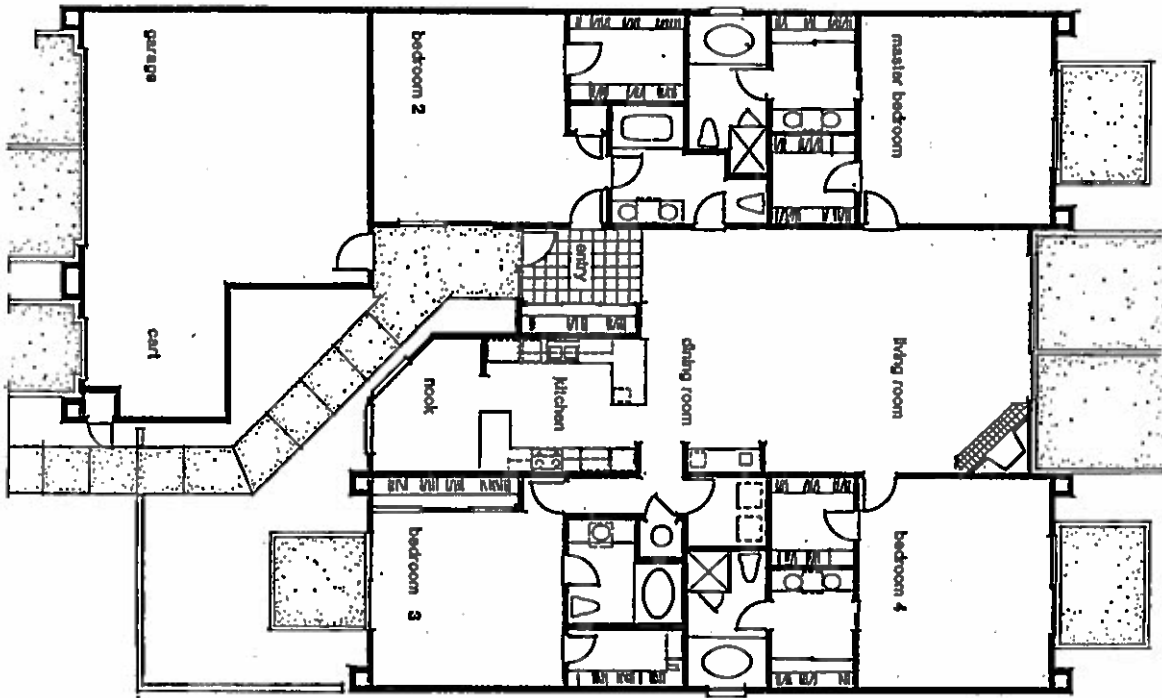


Plan C Carmel Valley Three bedrooms, three baths 2640 sq. ft. (estimated)



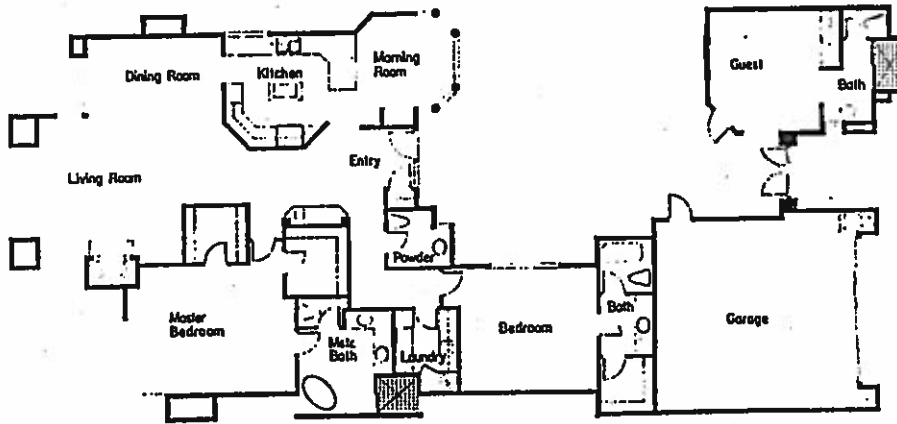
Plan B Belle Terre Three bedrooms, three baths 2454 sq. ft. (estimated)

Duna La Quinta

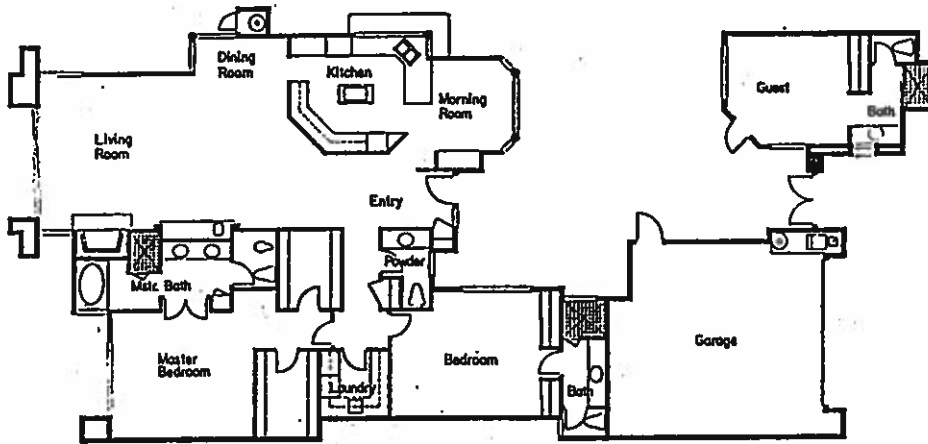


Plan D Oaktree Four bedrooms, four baths 3163 sq ft. (estimated)

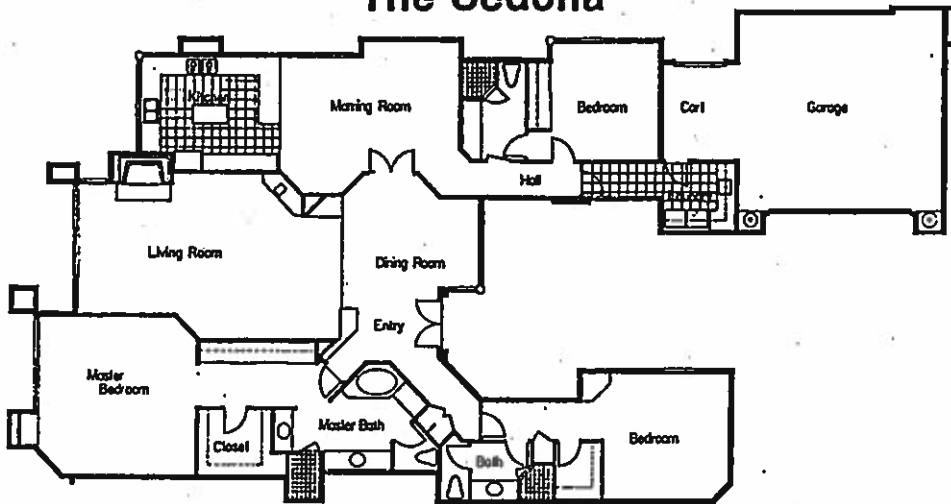
The Sonora



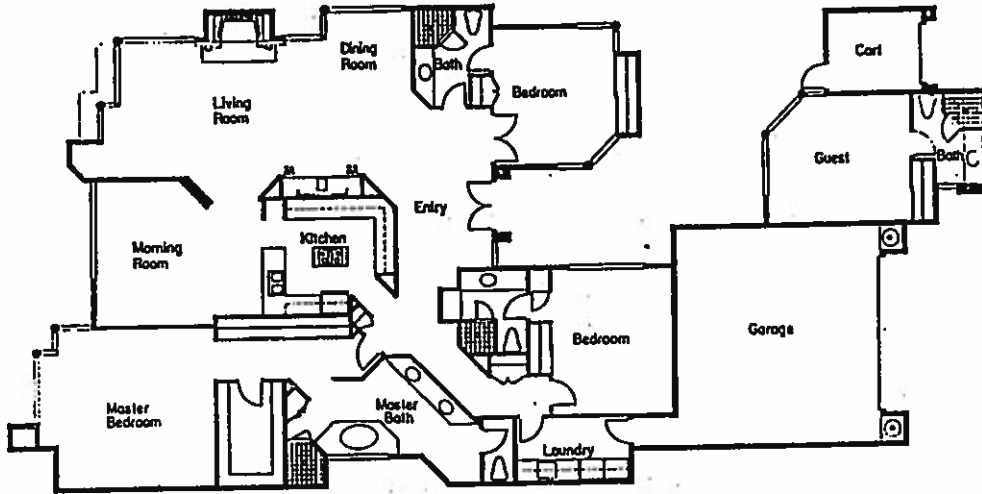
The Mesa



The Sedona



The Taos



The Santa Fe

